

GROSS INTERNAL AREA
 FLOOR 1: 1063 sq ft, 99 m², FLOOR 2: 1460 sq ft, 136 m²
 EXCLUDED AREAS: , GARAGE: 600 sq ft, 56 m²
 TOTAL: 2524 sq ft, 234 m²
 SIZES AND DIMENSIONS ARE APPROXIMATE, ACTUAL MAY VARY.

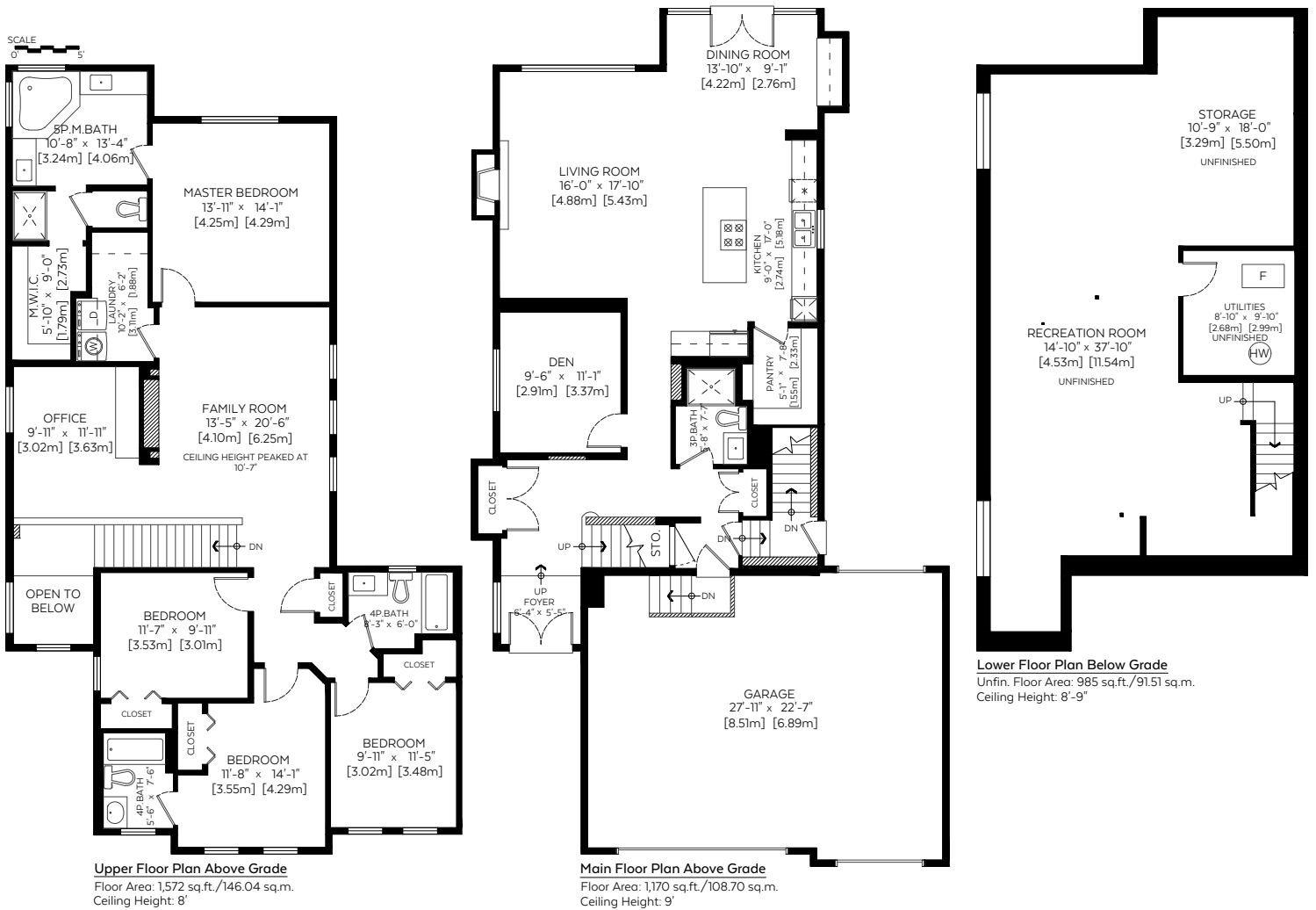
Main Floor: 1,170 sq.ft. 108.70 sq.m.
 Upper Floor: 1,572 sq.ft. 146.04 sq.m.

RMS Total (Above Grd.): 2,742 sq.ft. 254.74 sq.m.

Unfin. Lower Floor (Below Grd.): 985 sq.ft. 91.51 sq.m.
 Open To Below: 68 sq.ft. 6.32 sq.m.

Auxiliary Area

Garage: 606 sq.ft. 56.30 sq.m.



Measurements and Floorplans are certified, guaranteed and insured.
 The floor plan is not suitable for architectural/construction, square footage-method RMS standards used & is covered under E&O. © Excelsior Measuring Inc. 2018. All rights reserved for Excelsior Measuring Inc. Users shall not publish and distribute such material (in whole or in part) and/or incorporate it in other works in any form.
 *Exterior wall thickness extrapolated from thickness of exterior door and/or window casings in accordance with RMS principle 3.
 *Below Grade area calculated using interior perimeter walls (paint to paint).

