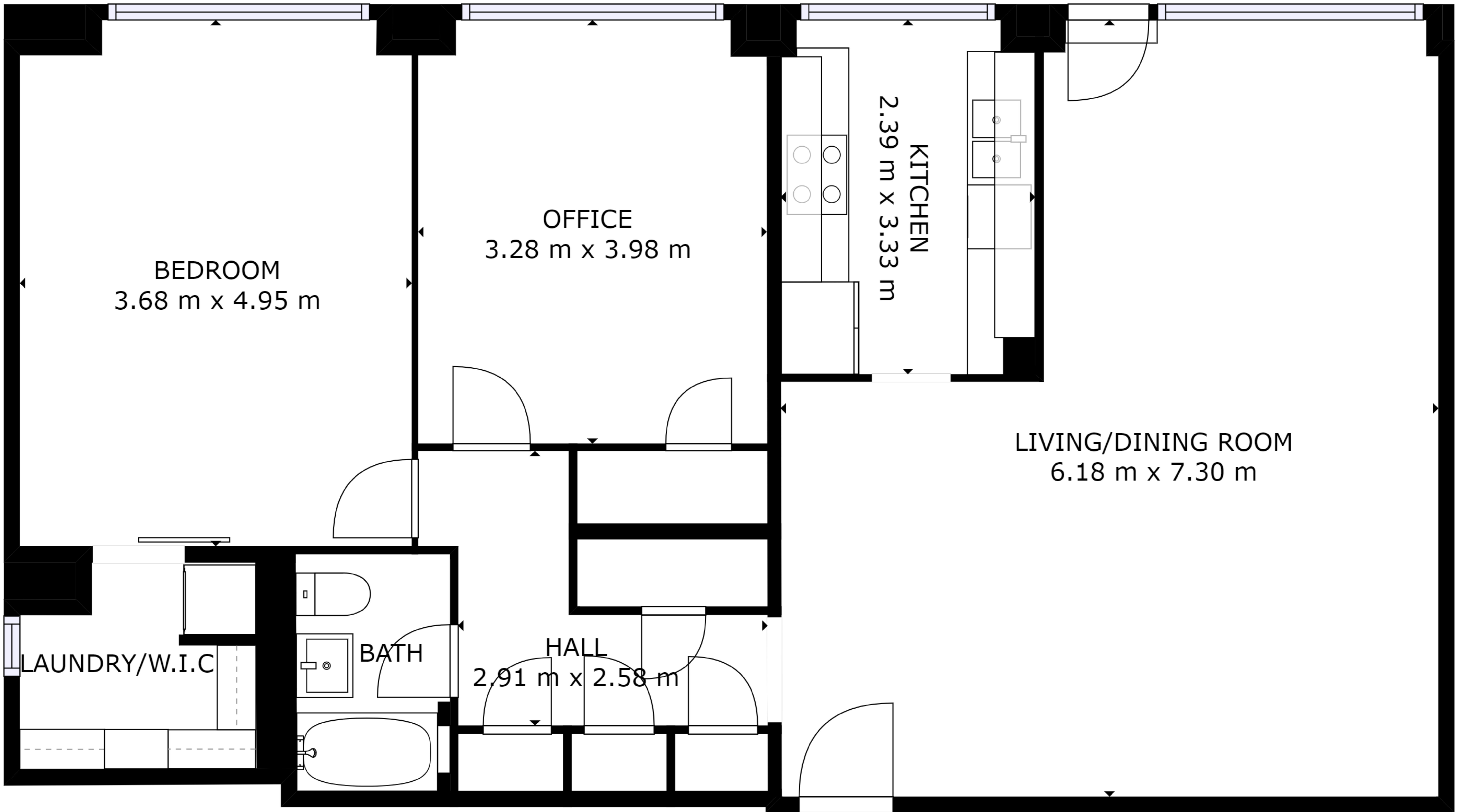


FLOOR 1

GROSS INTERNAL AREA  
 FLOOR 1: 97 m<sup>2</sup>, EXCLUDED AREAS:  
 BALCONY: 17 m<sup>2</sup>  
 TOTAL: 97 m<sup>2</sup>

SIZES AND DIMENSIONS ARE APPROXIMATE, ACTUAL MAY VARY.



FLOOR 1

GROSS INTERNAL AREA

FLOOR 1: 95 m<sup>2</sup>

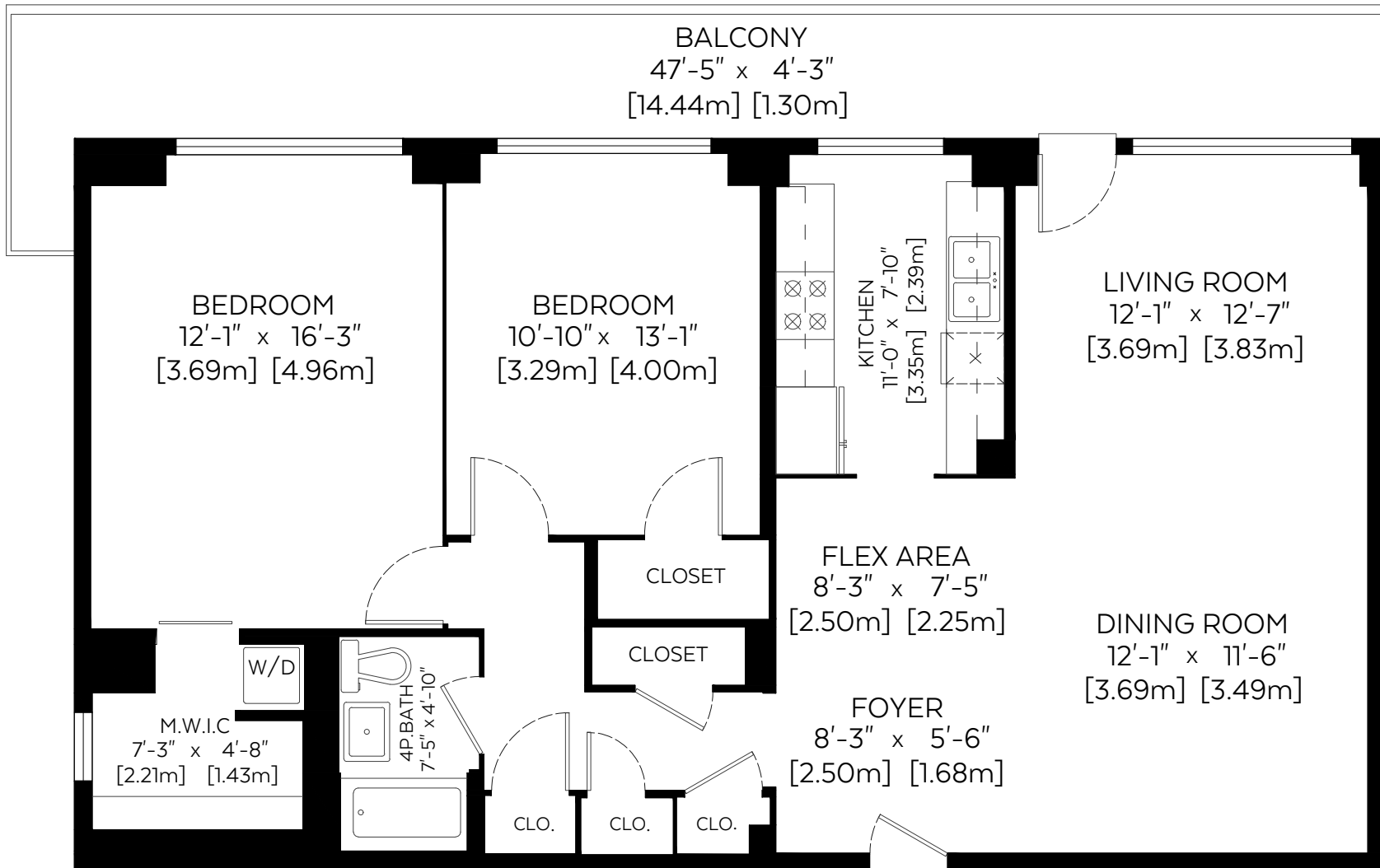
TOTAL: 95 m<sup>2</sup>

SIZES AND DIMENSIONS ARE APPROXIMATE, ACTUAL MAY VARY.

RMS Main Floor: 1,030 sq.ft. 95.69 sq.m.

Auxiliary Area

Balcony: 228 sq.ft. 21.18 sq.m.



Measured on: Sept. 25, 2017

The floor plan is not suitable for architectural/construction, square footage-method RMS standards used & is covered under E&O. © Excelsior Measuring Inc. 2017. All rights reserved for Excelsior Measuring Inc. Users shall not publish and distribute such material (in whole or in part) and/or incorporate it in other works in any form.  
\*RMS area calculated using interior perimeter walls (paint to paint) in accordance with RMS principle 4.